

8100 SA 7 Zyklop Metal Ratchet Set with push-through square, 1/4" drive, metric,
28 pieces
The Zyklop Metal Ratchet Push, 1/4"



EAN:	4013288173898	Size:	205x90x50 mm
Part number:	05004017001	Weight:	684 g
Article number:	8100 SA 7	Country of origin:	CZ
		Customs tariff number:	82041100

- Extremely slim ratchet with long lever
- Return angle of only 4.7°
- Hex-Plus allows socket head screws to live longer
- Absolutely smooth switchover of the non-detachable push-through square

Incredibly compact set arrangement with many tools in a minimum of space. A completely new ratchet set feeling thanks to the unique textile boxes that are very robust and durable. They can be positioned upright for tidy storage on the workshop shelf. Additional surface protection due to textile outer material. Low weight and volume for simpler mobility. Take it easy Tool Finder with colour coding according to sizes.



Web link

https://products.wera.de/en/ratchets_and_accessories_the_zyklop_ratchets_the_zyklop_ratchets_1_4_the_zyklop_metal_ratchet_push_1_4_8100_sa_7.html

Wera - 8100 SA 7
05004017001 - 4013288173898

Wera Werkzeuge GmbH
Korzter Straße 21-25
D-42349 Wuppertal
Tel: +49 (0)2 02 / 40 45-0
E-Mail: info@wera.de

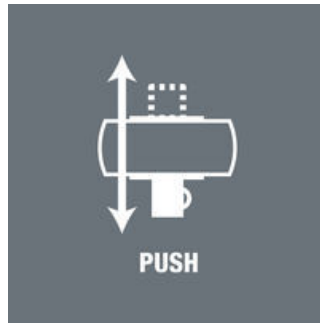
**8100 SA 7 Zyklus Metal Ratchet Set with push-through square, 1/4" drive, metric,
28 pieces
The Zyklus Metal Ratchet Push, 1/4"**



Zyklus Metal Push



Due to the ever-more confined working environment, space is becoming more and more an issue for the application of ratchets. Our product developers therefore intensively occupied themselves with the issue of confined working spaces, and Wera has now solved this problem. The extremely slim and robust Zyklus Metal ratchet with a long lever was what emerged. When the socket must not get lost and a coincidental change of direction has to be avoided at all cost, the Zyklus Metal Push is the correct choice.



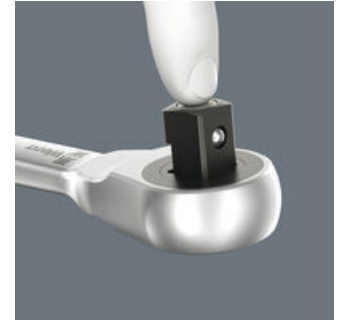
Due to the ever-more confined working environment, space is becoming more and more an issue for the application of ratchets. Our product developers therefore intensively occupied themselves with the issue of confined working spaces, and Wera has now solved this problem. The extremely slim and robust Zyklus Metal ratchet with a long lever was what emerged. When the socket must not get lost and a coincidental change of direction has to be avoided at all cost, the Zyklus Metal Push is the correct choice.

Slim design



Forged, full metal ratchet (chrome-molybdenum) that is extremely robust with a long service life; slim design to enable work in very confined spaces.

Square drive



Smooth push-through mechanism, that cannot get lost.

Web link

https://products.wera.de/en/ratchets_and_accessories_the_zyklus_ratchets_the_zyklus_ratchets_1_4_the_zyklus_metal_ratchet_push_1_4_8100_sa_7.html

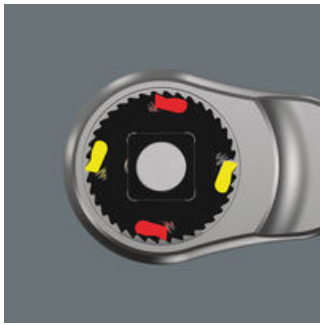
Wera - 8100 SA 7
05004017001 - 4013288173898

Wera Werkzeuge GmbH
Korzerter Straße 21-25
D-42349 Wuppertal
Tel: +49 (0)2 02 / 40 45-0
E-Mail: info@wera.de

**8100 SA 7 Zyklop Metal Ratchet Set with push-through square, 1/4" drive, metric,
28 pieces
The Zyklop Metal Ratchet Push, 1/4"**

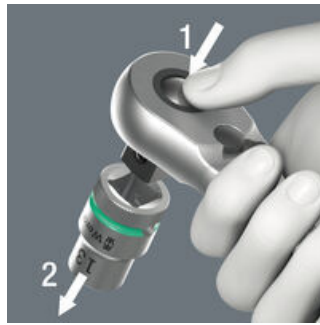


Dual ratchet teeth



The dual-ratchet-teeth design means that a 76 fine-toothing division can be achieved from the 38 robust teeth with a return angle of only 4.7°.

Ball lock



The ball lock ensures sockets and accessories fit securely, providing increased safety during operation. A short press on the release button allows the tool to be changed quickly.

Take it easy tool finder system



Take it easy tool finder system - with profile and size colour-coding for quick and easy tool selection. Colour-coded system for hexagon drive screws (L-Keys, Zyklop bit sockets), external hex drive screws and nuts (Joker wrenches, Zyklop sockets and Zyklop bit sockets with holding function), and TORX® drive screws (L-Keys, Zyklop bit sockets).

Textile boxes



The textile boxes offer dramatically improved portability, and are space-saving to boot! This means you can now carry the same collection of tools, in a much more compact and comfortable package. The hassle of running back and forth for the right tools has now become a thing of the past. And the much lower weight of a set makes carrying more convenient than ever before. The textile box including the tool will even survive a fall undamaged.

Web link

https://products.wera.de/en/ratchets_and_accessories_the_zyklop_ratchets_the_zyklop_ratchets_1_4_the_zyklop_metal_ratchet_push_1_4_8100_sa_7.html

Wera - 8100 SA 7
05004017001 - 4013288173898



Wera Werkzeuge GmbH
Korzter Straße 21-25
D-42349 Wuppertal
Tel: +49 (0)2 02 / 40 45-0
E-Mail: info@wera.de

**8100 SA 7 Zyklop Metal Ratchet Set with push-through square, 1/4" drive, metric,
28 pieces**
The Zyklop Metal Ratchet Push, 1/4"





Set contents:



8003 A Zyklop Metal Ratchet with push-through square and 1/4" drive, 1/4" x 141 mm

	05004003001	1x 1/4" x 141 mm
		



8790 HMA Zyklop 1/4" socket, 5 x 23 mm

	05003503001	1x 5 x 23 mm
	05003504001	1x 5.5 x 23 mm
	05003505001	1x 6 x 23 mm
	05003506001	1x 7 x 23 mm
	05003507001	1x 8 x 23 mm
	05003509001	1x 10 x 23 mm
	05003510001	1x 11 x 23 mm
	05003511001	1x 12 x 23 mm
	05003512001	1x 13 x 23 mm
		



8794 LA Zyklop extension with free-turning sleeve, long, 1/4", 1/4" x 150 mm

	05003526001	1x 1/4" x 150 mm
		



8794 A Zyklop wobble extension, 1/4", 1/4" x 56 mm

	05003527001	1x 1/4" x 56 mm
		



8784 A1 Zyklop bit adaptor, 1/4", 1/4" x 37 mm

	05003529001	1x 1/4" x 37 mm
		



851/1 Z bits, PH 1 x 25 mm

	05072070001	1x PH 1 x 25 mm
	05072072001	1x PH 2 x 25 mm
	05072074001	1x PH 3 x 25 mm
		

855/1 Z bits, PZ 1 x 25 mm

	05072080001	1x PZ 1 x 25 mm
	05072082001	1x PZ 2 x 25 mm
		

867/1 TORX® bits, TX 10 x 25 mm

	05066485001	1x TX 10 x 25 mm
	05066486001	1x TX 15 x 25 mm
	05066487001	1x TX 20 x 25 mm
	05066488001	1x TX 25 x 25 mm
	05066489001	1x TX 27 x 25 mm
	05066490001	1x TX 30 x 25 mm
		

Web link

https://products.wera.de/en/ratchets_and_accessories_the_zyklop_ratchets_the_zyklop_ratchets_1_4_the_zyklop_metal_ratchet_push_1_4_8100_sa_7.html

Wera - 8100 SA 7
05004017001 - 4013288173898

Wera Werkzeuge GmbH
Korzter Straße 21-25
D-42349 Wuppertal
Tel: +49 (0)2 02 / 40 45-0
E-Mail: info@wera.de

8100 SA 7 Zyklop Metal Ratchet Set with push-through square, 1/4" drive, metric,
28 pieces
The Zyklop Metal Ratchet Push, 1/4"



840/1 Z bits, 3 x 25 mm



05056315001	1x	3 x 25 mm
05056320001	1x	4 x 25 mm
05056325001	1x	5 x 25 mm
05056330001	1x	6 x 25 mm

Web link

https://products.wera.de/en/ratchets_and_accessories_the_zyklop_ratchets_the_zyklop_ratchets_1_4_the_zyklop_metal_ratchet_push_1_4_8100_sa_7.html

Wera - 8100 SA 7
05004017001 - 4013288173898

Wera Werkzeuge GmbH
Korzter Straße 21-25
D-42349 Wuppertal
Tel: +49 (0)2 02 / 40 45-0
E-Mail: info@wera.de